



DAMPA Grating LTX W

Gratings provides the visual effect of a concealed ceiling, and is designed with five mm wide profiles in square cells. The ceiling construction is leaving a high open area, and is frequently prescribed in areas with high ventilation demands or with special fire protection solutions.

Gratings installed in T- suspension systems are easy to open, and thus facilitating service and maintenance.

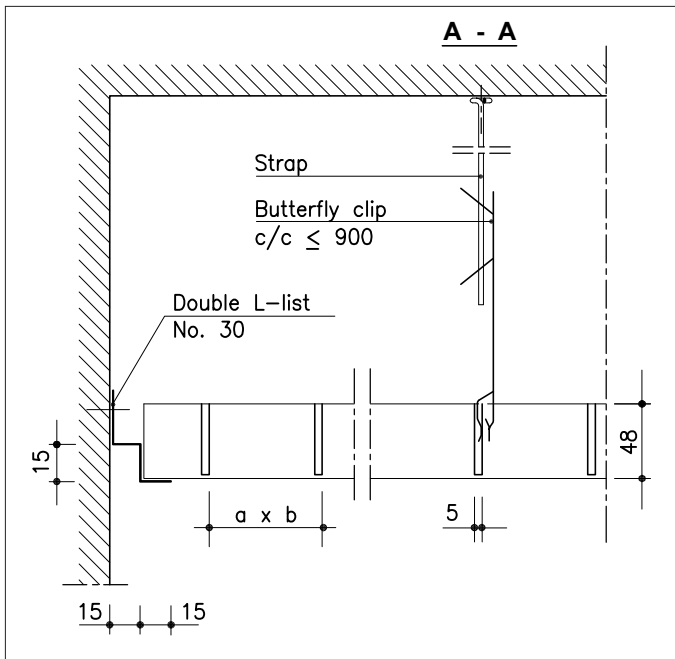
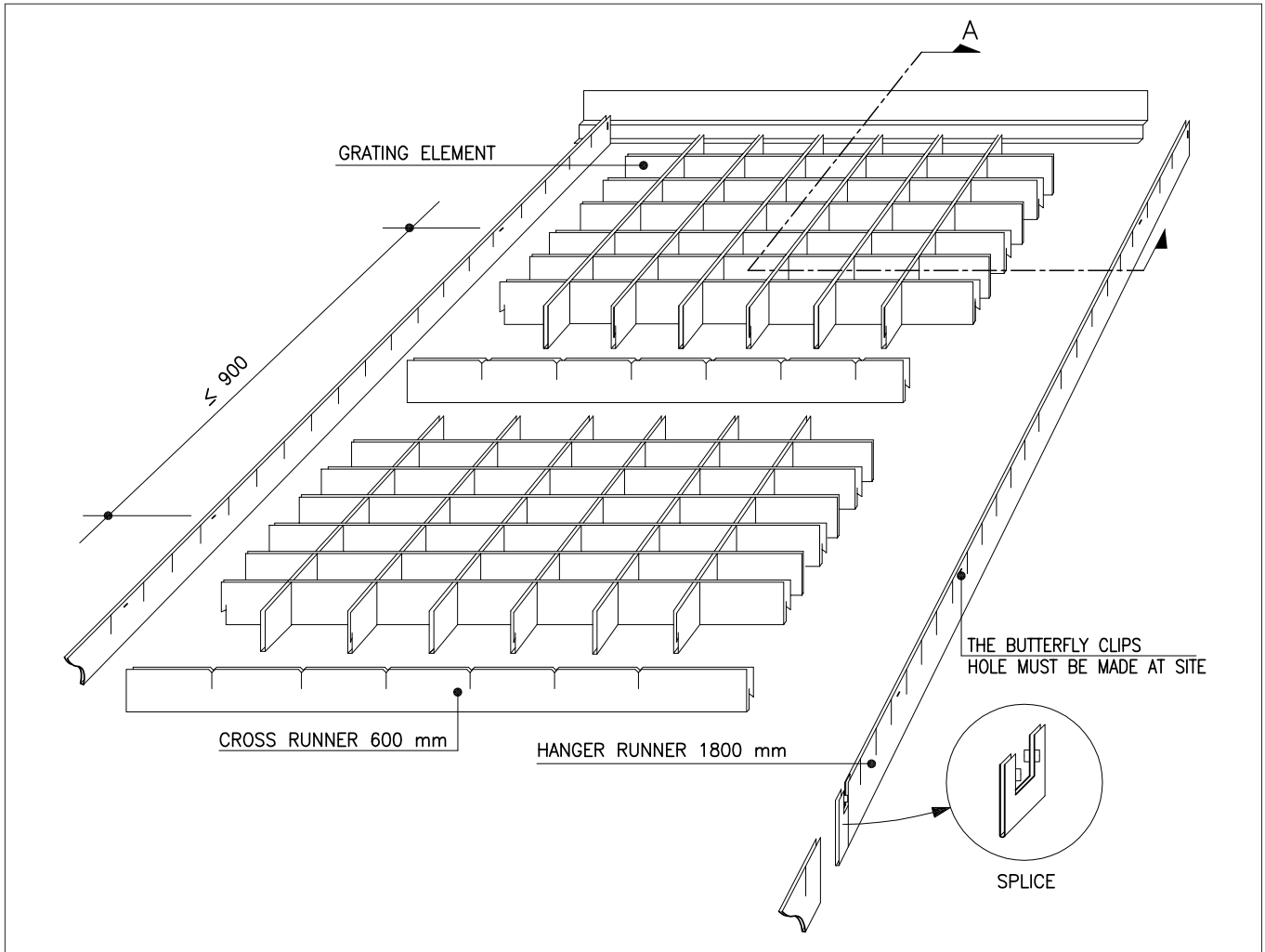
The Grating system is an open cell ceiling, where the cells can be defined in variable cell sizes.

The profiles are 5 mm wide, and 48 mm high.

Standard elements are 600 x 600 and 600 x 1200 mm, other dimensions on request.



DAMPA Grating LTX W



STANDARD W- GRATING

Material	0.4 mm Al
Element size	600 x 600, 600 x 1200 mm
Height h	48 mm
Cell size a x b mm	50, 75 and 100 mm
Finish	stove enamelled
Other special solutions	Please contact our technical information department.

OTHER ALTERNATIVES

Material	Debendable
Element size	Debendable of cell size and height
-length	600...1800 mm
-width	150...1200 mm
Height	-
Cell size a x b	50-200 mm Element size divided by cell size must go even.
Other special solutions	Please contact our technical information department.

